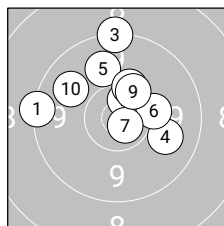
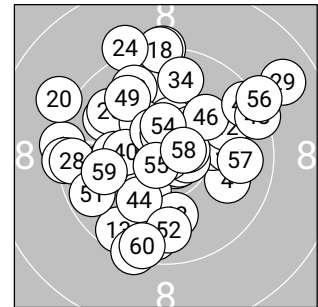


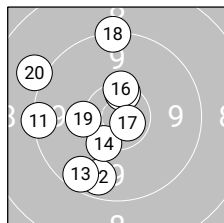
Ergebnis: **602.9** (572)
 Serien: 100.5 99.4 99.7 101.7 101.0 100.6
 Zähler: 33 26 1 0 0 0 0 0 0 0
 Innenezehner: 24
 Weitestе: 1688 (29.), 1474 (20.), 1405 (24.)
 beste Teiler: 25.4 (36.), 67.6 (25.), 74.0 (41.)
 Trefferkreis: 35.25 mm
 Trefferlage: 0.65 mm links, 1.32 mm hoch



Serie 1: 100.5 (95)

9.4←	10.6*↗	9.3↑	9.9↘	9.9↑
10.2→	10.7*↘	10.3*↗	10.3*↗	9.9↖

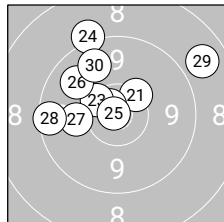
beste Teiler: 168.3 (7.), 306.0 (2.), 483.8 (9.)
 Trefferkreis: 27.19 mm
 Trefferlage: 0.26 mm links, 3.54 mm hoch



Serie 2: 99.4 (95)

9.4←	9.7↓	9.6↘	10.4*↘	10.5*↑
10.4*↑	10.7*↘	9.3↑	10.3←	9.1↖

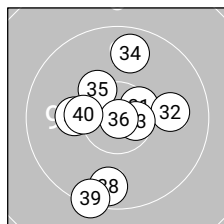
beste Teiler: 185.9 (17.), 381.2 (15.), 442.1 (16.)
 Trefferkreis: 28.23 mm
 Trefferlage: 3.94 mm links, 0.34 mm hoch



Serie 3: 99.7 (94)

10.4*↗	10.7*↖	10.4*↖	9.2↑	10.9*↖
9.9↖	10.1←	9.5←	8.8↗	9.8↖

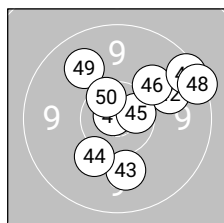
beste Teiler: 67.6 (25.), 203.6 (22.), 425.9 (23.)
 Trefferkreis: 33.04 mm
 Trefferlage: 2.20 mm links, 4.21 mm hoch



Serie 4: 101.7 (97)

10.5*↗	10.0→	10.6*↗	9.8↑	10.3*↖
10.9*↘	10.2←	9.7↓	9.4↓	10.3*←

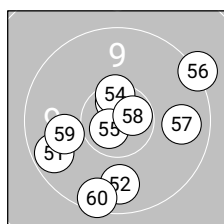
beste Teiler: 25.4 (36.), 268.1 (33.), 353.0 (31.)
 Trefferkreis: 27.32 mm
 Trefferlage: 0.39 mm links, 0.57 mm tief



Serie 5: 101.0 (96)

10.9*↖	9.9↗	10.0↓	10.2↘	10.6*↗
10.1↗	9.5↗	9.4↗	9.9↖	10.5*↖

beste Teiler: 74.0 (41.), 270.8 (45.), 339.0 (50.)
 Trefferkreis: 23.84 mm
 Trefferlage: 2.66 mm rechts, 1.80 mm hoch



Serie 6: 100.6 (95)

9.7↖	9.8↓	10.6*↑	10.5*↑	10.7*↖
9.3↗	9.8→	10.7*↗	10.0←	9.5↓

beste Teiler: 164.0 (55.), 226.4 (58.), 265.0 (53.)
 Trefferkreis: 29.25 mm
 Trefferlage: 0.17 mm rechts, 1.40 mm tief

